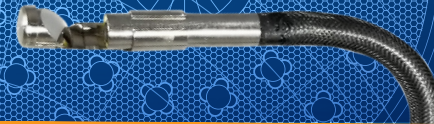


90° SIDE VIEW ADAPTER 3.9 MM INSTALLATION GUIDE

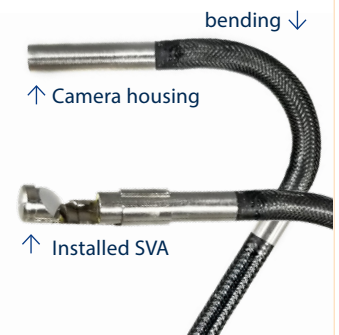


The ViewTech 90° Side View Adapter (SVA), for the 3.9mm VJ-3 video borescope, is designed to give you the ability to see at a right angle directly to the side when articulation is restricted.

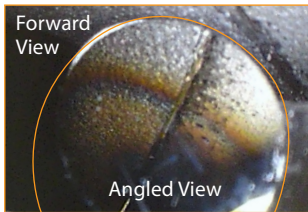
INSTALLATION

1. Hold the distal end of the borescope insertion tube close to the tip of the borescope lights and gently pinch the bending section and half of the camera housing with your index finger and thumb,
2. Take the opposite hand and pinch the SVA with your index finger and thumb.
3. Start by inserting the SVA onto the camera housing on a slight angle so that part of the camera housing starts to enter the SVA.
4. Square-up the angle of the camera housing as you gently slide the SVA onto the camera housing.

Note: There is a designed stop gap between the mirror and the distal top of the camera housing.



ADJUSTMENT FOR OPTIMAL VIEWING



1. Turn on the borescope so you can see the image on the LCD viewing screen.
2. Rotate the view of the SVA so that the crescent (curved portion) is facing the top of the screen. the top 1/3 of the screen is the forward view and the bottom is the 90° view.
3. The SVA was designed to allow a portion of the screen to show the forward facing view. The straight forward view will help you navigate the assembly to find the area of interest.
4. To reduce glare, adjust the Gain control to zero using the left and right arrows on the Control Panel.

ANTI-FOD PROCEDURE



1. Attached the yellow protective lens cap to the camera housing section of the insertion tube.
2. Insert the SVA under the protective lens cap by gently lifting a portion of the cap, then aligning the SVA underneath. You may also wish to twist the SVA slightly to ease it into position under the protective cap,
3. The SVA should look identical to the image on the left. Pull gently on the SVA to confirm the attachment is as secure as possible.
4. Safety tape can be applied over the entire setup for an added layer of security.

CAUTION & CARE OF THE SIDE VIEW ADAPTER

Be careful, the mirrored surface may scratch. Use compressed air or a keyboard duster to clean the lens. Use a microfiber cloth only as needed.

Please note, the Side View Adapter (SVA) is removable. Make sure to account for the accessory before exiting your assembly.