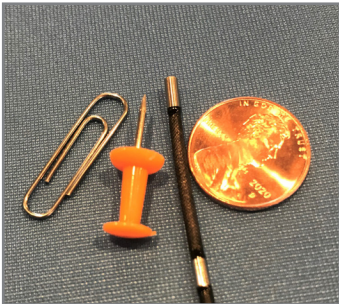


ARTICULATING VIDEO BORESCOPE 2.2mm

**2.2mm DIAMETER**

Available in a 1.0m length. The insertion tube features our patented EasyGlide, 4-layer Tungsten sheathing for smooth entry and exit, and are IP 67 rated for rugged durability.

**ULTRA-PORTABLE DESIGN**

No need for a separate monitor. Our lightweight, compact design has a built-in, full-color LCD display. All image capture, storage and processing is handled within the standalone unit, and the rechargeable Li-ion battery delivers up to 4 hours of cord-free run time.

**TWO-WAY ARTICULATION**

Designed for responsiveness and accuracy, the direct mechanical articulation never requires calibration, and the camera/LED module stays in place even when your thumb is removed from the joystick.

**UNRIVALED SERVICE AND EXPERTISE**

The VJ-3 is brought to you by the same team of borescope experts that changed the industry 10 years ago with the world's 1st mechanically articulating, joystick-controlled video borescope. Find out why we are still the #1 seller of borescopes in the US.

INSERTION TUBE	Outer Diameter	2.2mm
	Length	1.0m or 1.5m
	Exterior Material	Tungsten EasyGlide, crush-resistant
	Chemical Compatibility	Water, machine oil, heating oil, diesel, 3.5% saline concentrate
	Articulation Range	180±10° backward
OPTICS	Field of View	120°±10°
	Depth of Field	3.0mm - 50.0mm
	Effective Pixels	160,000 pixels
	Illumination Method	4 Super high-intensity white LEDs
	Illumination Output	≤ 4,000lux
BASE UNIT	Display Monitor	3.5" IPS anti-glare LCD
	Articulation Control	Thumb-actuated, mechanical rocker
	Joystick Lock	Automatic
	Brightness Control	6-step LED brightness adjustment
	Control Buttons	Image capture, video capture, LED control, frame rotation, freeze frame, 4X zoom, menu access / navigation
	Playback	Photos, videos (w/wo audio), thumbnail view
	Audio / Microphone	3.5mm headset / microphone jack
	Internal storage	16GB SD Card / 10,000 photos or 8 hours video
	Data I/O ports	SD card, micro USB, TV Out (NTCS / PAL) or HDMI
	Battery	One 18650B PCB-Protected Li-ion battery (replaceable)
	AC Power (optional)	100V - 240V
	Operating Method	One handed, portable
	Dimensions	13.0" x 12.0" x 4.5"
	Weight	2.2 lbs. / 1.0 kg
MENU FUNCTIONS AND OPTIONS	User Interface	Drop down operating menu
	File Management	Photo and video recording, playback, thumbnail preview, delete
	Image Control	Image rotation, live freeze, zoom in/out
	Image Format	JPEG, optional date and time stamp
	Video Format	AVI, optional date and time stamp
	Language	English, Spanish
OPERATING LIMITS	Run Time	≤ 2.5 Hours
	Operating Temp. Base Unit	-20 - 50°C, -5 - 120°F
	Operating Temp. Insertion Tube	-10 - 50°C, 15 - 120°F
	IP Rating, Insertion Tube	IP67
	IP Rating, Base Unit	IP54