

ARTICULATING VIDEO BORESCOPE FOR **HEAT EXCHANGERS/TUBING****THE BORESCOPE**
YOU NEED TO SEE

"I just love the portability and design of your borescope! We use it more than any of the other scopes at the facility. The 5.0 meter unit handles 90% of my inspection needs. Thanks for the great video borescope!"

ENGINEER, DOMINION NUCLEAR POWER

"We manufacture heat exchangers. In the past, after we sealed up the tank, we had no way of doing a final inspection to look for any debris. One time, that mistake cost us a whole project, but now, with your borescope, we have 100% confidence that we didn't miss a thing."

QUALITY CONTROL, HEAT EXCHANGER MANUFACTURING COMPANY



Heat Exchangers



Internal Inspection

HEAT EXCHANGER INSPECTION

The efficiency of your boiler tubes or heat exchangers can be adversely affected by corrosion, pitting, loose debris, or leakage. The VJ-3 articulating video borescope is ergonomic and easy to use, and can quickly inspect heat exchangers and tubing for pitting, cracking, corrosion, erosion, weld integrity, and tube blockages, while minimizing downtime and optimizing planned maintenance.

BOILER TUBE INSPECTION

Borescope inspection of the interior of boiler tubes can easily show common problems such as corrosion, cracking, scale deposits and more. By conducting regular boiler tube inspections, with the VJ-3 video borescope, you can easily identify wear, corrosion, blockage, and other problems so you can stay ahead of issues that may cause downtime. The VJ-3's joystick controlled articulation ensures you will not miss any problem areas.

CONDENSER TUBE INSPECTION

Condenser tubes are specifically designed to efficiently condense process fluid off of the outside of the tube. Effective use of a borescope can visually determine if there is any scale formation, copper corrosion, or biological fouling. Record your inspections to track the condition of condenser tubes over time to allow for early detection of failing tubes.

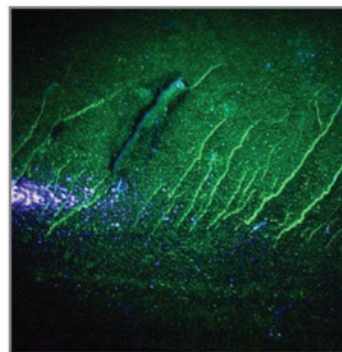
ARTICULATING VIDEO BORESCOPE

**MULTIPLE DIAMETERS**

Available in lengths from 1.0m to 8.0m to suit any application. All insertion tubes feature our patented EasyGlide, 4-layer Tungsten sheathing for smooth entry and exit, and are IP 67 rated for rugged durability. **Now available in 2.2mm diameter.**

**DUAL CAMERA (DC)**

The VJ-3 Dual Camera is a 6.0mm diameter and has lengths of 1.5m, 3.0m, 5.0m, or 8.0m. The DC assists in viewing forward and 90 degrees. Switch between the two cameras while keeping the borescope inside the inspection area.

**ULTRAVIOLET (UV)**

The VJ-3 UV borescope is a 6.0mm diameter and has lengths of 1.0m and 3.0m. The UV borescope facilitates endoscopic dye penetrant testing by detecting surface defects such as microfractures, delamination, seams, incomplete fusion and other defects in non-porous materials.

**INFRARED (IR)**

The VJ-3 IR borescope is a 6.0mm diameter. Available in lengths of 1.0m and 2.0m. Switch between white LED light or IR light. The IR can light a dark area without being detected by the human eye, allowing for undetectable picture and video capture.