

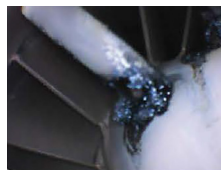
ARTICULATING VIDEO BORESCOPE FOR **POWER GENERATION****THE BORESCOPE**
YOU NEED TO SEE

“I just love the portability and design of your borescope! We use it more than any of the other scopes at the facility. The 6.9mm 5.0 meter unit handles 90% of my inspection needs. Thanks for the great video borescope!”

ENGINEER, DOMINION NUCLEAR POWER

“This scope works just as well as any of the much higher priced scopes out there, and the image quality is as good as anything we have seen in the past.”

PRESIDENT, GROUND POWER GENERATION REPAIR COMPANY



Carbon Build-up



Internal Inspection

TURBINE INSPECTION

Add the VJ-3 video borescope to your arsenal to keep preventive and predictive maintenance on track and reduce downtime. Conduct and document remote visual inspections in conventional thermal plants, such as steam, co-generation or gas or with renewable energy equipment, including wind, hydroelectric and nuclear. Is your turbine due for an inspection? The VJ-3 is ready when you are.

PUMP INSPECTION

Use the VJ-3 to access and document inspection of the pumps in the power plant. Effortlessly take photos by pulling on the image capture trigger. Record video by pressing a button with your thumb. Lighting controls are nearby. The VJ-3 will help you identify any issues in your pumps, and you can share the inspection with your team.

BOILER TUBE INSPECTION

Conduct regular boiler tube inspections with the VJ-3 video borescope. Identify wear, corrosion, blockage, and other problems so you can stay ahead of issues that may cause downtime. The VJ-3's joystick controlled articulation ensures you will not miss any problem areas.

HEAT EXCHANGER INSPECTION

The VJ-3 is ergonomic and easy to use. You can quickly inspect heat exchangers and tubing for pitting, cracking, corrosion, erosion, weld integrity and tube blockages, while minimizing downtime and optimizing planned maintenance.

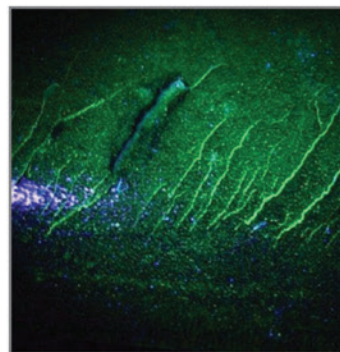
ARTICULATING VIDEO BORESCOPE

**MULTIPLE DIAMETERS**

Available in lengths from 1.0m to 8.0m to suit any application. All insertion tubes feature our patented EasyGlide, 4-layer Tungsten sheathing for smooth entry and exit, and are IP 67 rated for rugged durability. **Now available in 2.2mm diameter.**

**DUAL CAMERA (DC)**

The VJ-3 Dual Camera is a 6.0mm diameter and has lengths of 1.5m, 3.0m, 5.0m, or 8.0m. The DC assists in viewing forward and 90 degrees. Switch between the two cameras while keeping the borescope inside the inspection area.

**ULTRAVIOLET (UV)**

The VJ-3 UV borescope is a 6.0mm diameter and has lengths of 1.0m and 3.0m. The UV borescope facilitates endoscopic dye penetrant testing by detecting surface defects such as microfractures, delamination, seams, incomplete fusion and other defects in non-porous materials.

**INFRARED (IR)**

The VJ-3 IR borescope is a 6.0mm diameter. Available in lengths of 1.0m and 2.0m. Switch between white LED light or IR light. The IR can light a dark area without being detected by the human eye, allowing for undetectable picture and video capture.