



# VIEWTECH

BORESCOPIES

THE MOST INNOVATIVE BORESCOPES IN THE INDUSTRY

ALL NEW  
**VJ-4**



DUAL CAMERA



SINGLE CAMERA

TRY IT  
BEFORE YOU BUY IT  
**NO-COST  
DEMO  
PROGRAM**



TOP RATED CUSTOMER SERVICE



HUGE ON-SITE INVENTORY



QUALITY YOU SHOULD COUNT ON

**CUSTOM OPTIONS TO FIT EVERY APPLICATION**

**HD** 5.5" OLED SCREEN

 TOUCH SCREEN OR  
STYLUS INTERFACE

 DUAL CAMERA  
PICTURE-IN-PICTURE

 ON-SCREEN  
ANNOTATION

 INDUSTRY-FIRST  
MINI-JOYSTICKS

 EASY FOLDER  
ORGANIZATION &  
STORAGE

**LIGHTING &  
FOCUS OPTIONS**

**W** WHITE LIGHT

**UV** ULTRAVIOLET

**IR** INFRARED

**FF** FAR FOCUS

**DC** DUAL CAMERA

**AVAILABLE DIAMETERS**



**AVAILABLE  
LENGTHS**

	METERS	FEET
	1.0M	3' - 3"
	1.5M	4' - 11"
	2.0M	6' - 6"
	3.0M	9' - 10"
	5.0M	16' - 4"
	8.0M	26' - 2"



**360°** ARTICULATION

6.0mm - 3.9mm - 2.8mm

\* AVAILABLE **DUAL CAMERA**



**2-WAY** ARTICULATION

2.2mm

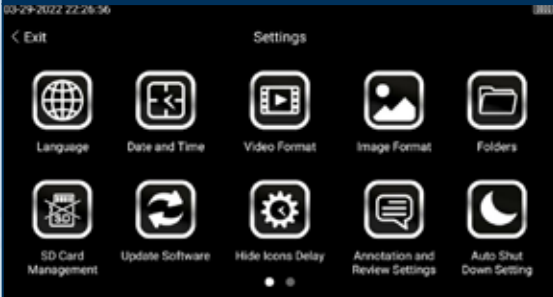
**EASY ORGANIZATION & STORAGE**



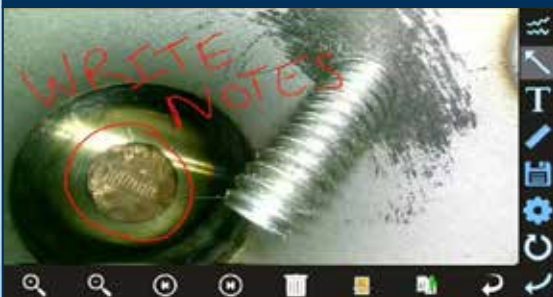
**INSTANT ACCESS TO KEY FUNCTIONS**



**WIDE RANGE OF SETTINGS**



**ON-SCREEN ANNOTATION**



**TOUCH-SCREEN OR STYLUS INTERFACE**



**RUGGEDIZED CASE & ACCESSORIES  
ARE INCLUDED WITH EVERY  
BORESCOPE WE SELL**



**UV AND WHITE LIGHT FLASHLIGHTS**



**SELF SPOOLING  
HOLDER TUBE  
IN THE CASE**

